

Sample Ballot

Instructions

How to vote

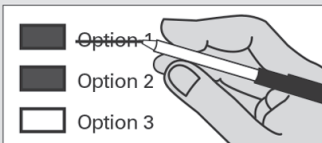


Use a blue or black ink pen.

Vote for one in each contest.

If you vote for more than one, no votes will be counted for that race.

If you make a mistake



Draw a line through the entire response.

Then you may make another choice.

Who donates to campaigns?

View contributors for candidates and measures at:

Public Disclosure Commission

www.pdc.wa.gov

Toll Free (877) 601-2828

Local Measures

Toutle Lake School District No. 130 Proposition 1

Replacement Maintenance and Operation Levy

The Board of Directors of Toutle Lake School District No. 130 adopted Resolution No. 12-16, concerning a proposition to finance maintenance and operation expenses. This proposition would authorize the District to meet the educational needs of its students by levying the following excess taxes, in place of an expiring levy, on all taxable property within the District, for support of the District's General Fund maintenance and operation expenses:

| Collection Years | Approximate Levy Rate / \$1,000 Assessed Value | Levy Amount |
|------------------|--|-------------|
| 2018 | \$3.00 | \$1,110,000 |
| 2019 | \$2.97 | \$1,110,000 |
| 2020 | \$2.94 | \$1,110,000 |

all as provided in Resolution No. 12-16. Should this proposition be approved?

Levy Yes

Levy No

Woodland School District No. 404 Proposition 1

Replacement Educational Maintenance and Operations Levy

The Board of Directors of Woodland School District No. 404 adopted Resolution No. 16-10 concerning a proposition for educational funding. This proposition authorizes the District to levy the following excess taxes, to replace an expiring levy, on all taxable property within the District, to support the District's educational maintenance and operations:

| Collection Years | Approximate Levy Rate / \$1,000 Assessed Value | Levy Amount |
|------------------|--|-------------|
| 2018 | \$2.70 | \$4,500,000 |
| 2019 | \$2.70 | \$4,750,000 |
| 2020 | \$2.69 | \$5,000,000 |

Should this proposition be approved?

Yes

No

End of Ballot