

Sample Ballot

Instructions

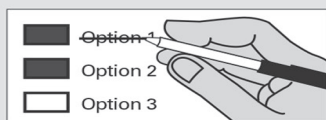
How to vote



Use a blue or black ink pen.
Vote for one in each race.

If you vote for more than one, no
votes will be counted for that race.

If you make a mistake



Draw a line through the entire
response or candidate's name.
Then you may make another
choice.

Optional write-in



To vote for a candidate not listed,
fill in the box to the left of the
dashed line and print the name of
the candidate.

Who donates to campaigns?

View contributors for candidates
and measures at:
Public Disclosure Commission
www.pdc.wa.gov
Toll Free (877) 601-2828

Initiatives to the People

Initiative Measure No. 1433

Initiative Measure No. 1433 concerns
labor standards. This measure would
increase the state minimum wage to
\$11.00 in 2017, \$11.50 in 2018, \$12.00
in 2019, and \$13.50 in 2020, require
employers to provide paid sick leave,
and adopt related laws.

Should this measure be enacted into
law?

Yes

No

Initiative Measure No. 1464

Initiative Measure No. 1464 concerns
campaign finance laws and lobbyists.
This measure would create a campaign-
finance system; allow residents to
direct state funds to candidates; repeal
the non-resident sales-tax exemption;
restrict lobbying employment by certain
former public employees; and add
enforcement requirements.

Should this measure be enacted into
law?

Yes

No

Initiative Measure No. 1491

Initiative Measure No. 1491 concerns
court-issued extreme risk protection
orders temporarily preventing access
to firearms. This measure would allow
police, family, or household members
to obtain court orders temporarily
preventing firearms access by persons
exhibiting mental illness, violent or
other behavior indicating they may
harm themselves or others.

Should this measure be enacted into
law?

Yes

No

Initiative Measure No. 1501

Initiative Measure No. 1501 concerns
seniors and vulnerable individuals. This
measure would increase the penalties
for criminal identity theft and civil
consumer fraud targeted at seniors or
vulnerable individuals; and exempt
certain information of vulnerable
individuals and in-home caregivers
from public disclosure.

Should this measure be enacted into
law?

Yes

No

Continue voting next page



Note: The Sample Ballot includes all measures and races presented within the county. Only races and measures you are entitled to vote upon will appear on your Official Ballot. To ascertain whether or not your ballot was counted, please contact the Elections Office at (360) 577-3005.

Sample Ballot

Initiatives to the Legislature

Initiative Measure No. 732

Initiative Measure No. 732 concerns taxes. This measure would impose a carbon emission tax on certain fossil fuels and fossil-fuel-generated electricity, reduce the sales tax by one percentage point and increase a low-income exemption, and reduce certain manufacturing taxes.

Should this measure be enacted into law?

Yes

No

Initiative Measure No. 735

Initiative Measure No. 735 concerns a proposed amendment to the federal constitution. This measure would urge the Washington state congressional delegation to propose a federal constitutional amendment that constitutional rights belong only to individuals, not corporations, and constitutionally-protected free speech excludes the spending of money.

Should this measure be enacted into law?

Yes

No

Advisory Votes

Advisory Vote No. 14

House Bill 2768

The legislature extended, without a vote of the people, the insurance premium tax to some insurance for stand-alone family dental plans, costing an indeterminate amount in the first ten years, for government spending.

This tax increase should be:

Repealed

Maintained

Advisory Vote No. 15

Second Engrossed Substitute House Bill 2778

The legislature imposed, without a vote of the people, certain limitations on the retail sales and use tax exemptions for clean alternative-fuel vehicles, costing \$2,000,000 in the first ten years, for government spending.

This tax increase should be:

Repealed

Maintained

Proposed Amendment to the State Constitution

Senate Joint Resolution No. 8210

The legislature has proposed a constitutional amendment on the deadline for completing state legislative and congressional redistricting. This amendment would require the state redistricting commission to complete redistricting for state legislative and congressional districts by November 15 of each year ending in a one, 46 days earlier than currently required.

Should this constitutional amendment be:

Approved

Rejected

Cowlitz County

Proposition 1

One-tenth of One Percent Sales and Use Tax for Emergency 911 Communication Systems and Facilities

The Cowlitz County Board of County Commissioners adopted Resolution No. 16 082 concerning a proposition to increase the sales and use tax. The proposition would increase the sales and use tax within Cowlitz County by one-tenth of one percent for the purpose of providing funds for the costs associated with financing, design, acquisition, construction, equipping, operating, maintaining, remodeling, repairing, re-equipping, and improvement of emergency 911 communication systems and facilities.

Should this proposition be approved?

Yes

No

Sample Ballot

President / Vice President

Partisan Office

Hillary Clinton / Tim Kaine
Democratic Party Nominees

Donald J. Trump / Michael R. Pence
Republican Party Nominees

Alyson Kennedy / Osborne Hart
Socialist Workers Party Nominees

Gloria Estela La Riva / Eugene Puryear
Socialism & Liberation Party Nominees

Jill Stein / Ajamu Baraka
Green Party Nominees

Darrell L. Castle / Scott N. Bradley
Constitution Party Nominees

Gary Johnson / Bill Weld
Libertarian Party Nominees

READ: Each candidate for President and Vice President is the official nominee of a political party. For other partisan offices, each candidate may state a political party that he or she prefers. A candidate's preference does not imply that the candidate is nominated or endorsed by the party, or that the party approves of or associates with that candidate.

U.S. Senator

Partisan Office

Patty Murray
(Prefers Democratic Party)

Chris Vance
(Prefers Republican Party)

U.S. Representative

Congressional District 3
Partisan Office

Jaime Herrera Beutler
(Prefers Republican Party)

Jim Moeller
(Prefers Democratic Party)

Governor

Partisan Office

Jay Inslee
(Prefers Democratic Party)

Bill Bryant
(Prefers Republican Party)

Lt. Governor

Partisan Office

Cyrus Habib
(Prefers Democratic Party)

Marty McClendon
(Prefers Republican Party)

Secretary of State

Partisan Office

Kim Wyman
(Prefers Republican Party)

Tina Podlodowski
(Prefers Democratic Party)

State Treasurer

Partisan Office

Duane Davidson
(Prefers Republican Party)

Michael Waite
(Prefers Republican Party)

State Auditor

Partisan Office

Mark Miloscia
(Prefers Republican Party)

Pat (Patrice) McCarthy
(Prefers Democratic Party)

Attorney General

Partisan Office

Bob Ferguson
(Prefers Democratic Party)

Joshua B. Trumbull
(Prefers Libertarian Party)

Commissioner of Public Lands

Partisan Office

Steve McLaughlin
(Prefers Republican Party)

Hilary Franz
(Prefers Democratic Party)

Superintendent of Public Instruction

Nonpartisan Office

Erin Jones

Chris Reykdal

Insurance Commissioner

Partisan Office

Mike Kreidler
(Prefers Democratic Party)

Richard Schrock
(Prefers Republican Party)



Sample Ballot

State Senator

Legislative District 19
Partisan Office
4-year short and full term

Dean Takko
(Prefers Democratic Party)

Sue Kuehl Pederson
(Prefers Independent GOP Party)

State Representative Pos. 1

Legislative District 19
Partisan Office
2-year short and full term

Jim Walsh
(Prefers Republican Party)

Teresa Purcell
(Prefers Democratic Party)

State Representative Pos. 2

Legislative District 19
Partisan Office

Brian E. Blake
(Prefers Democratic Party)

Jimi O'Hagan
(Prefers Republican Party)

State Senator

Legislative District 20
Partisan Office

John Braun
(Prefers Republican Party)

State Representative Pos. 1

Legislative District 20
Partisan Office

Richard DeBolt
(Prefers GOP Party)

State Representative Pos. 2

Legislative District 20
Partisan Office

Ed Orcutt
(Prefers Republican Party)

Cowlitz County Commissioner

District 1
Partisan Office

Arne Mortensen
(Prefers Republican Party)

Michael A. Karnofski
(Prefers Democratic Party)

Cowlitz County Commissioner

District 2
Partisan Office

Shawn Nyman
(Prefers Democratic Party)

Dennis Weber
(Prefers Republican Party)

Supreme Court

Justice Position 1
Nonpartisan Office

Mary Yu

David DeWolf

Supreme Court

Justice Position 5
Nonpartisan Office

Barbara Madsen

Greg Zempel

Supreme Court

Justice Position 6
Nonpartisan Office

Charles (Charlie) Wiggins

Dave Larson

Court of Appeals Division 2, District 3

Judge Position 2
Nonpartisan Office

Jill M. Johanson

Cowlitz County Superior Court

Judge Position 1
Nonpartisan Office

Joshua J. Baldwin

Gary B. Bashor

Cowlitz Public Utility District

Commissioner District 3
Nonpartisan Office

Dave Quinn

Lonnie Knowles

Sample Ballot

City of Kalama

Proposition 1

Sales/Use Tax Increase of 0.1% for a New Police Facility

The City Council of the City of Kalama adopted resolution No. 641 concerning a sales and use tax increase pursuant to RCW 82.14.450. If approved, this proposition would authorize the City of Kalama to fix and impose an additional sales and use tax of 0.1%, split between the City (85%) and Cowlitz County (15%). Proceeds shall be used to construct and equip a new police facility and to cover other criminal justice costs.

Should proposition 1 be:

Approved

Rejected

City of Kelso

Proposition 1

Charter Amendment Concerning Councilmember District Residency Requirements

The Kelso City Council adopted Resolution 16-1161 concerning City Charter amendments related to geographic districts and councilmember district residency requirements. If approved, this proposition would amend Charter Sections 2.02(a)-(b), 2.06(a), and 2.06(c) by eliminating provisions related to the creation of geographic districts, district residency requirements to hold office and councilmember vacancies and appointments resulting from district residency. If approved, candidates and councilmembers for each council position may reside anywhere within the City.

Should this proposition be:

Approved

Rejected

City of Kelso

Proposition 2

Charter Amendment Concerning Councilmember Vacancies

The City Council adopted Resolution 16-1162 concerning City Charter amendments related to councilmember vacancies. If approved, this proposition would amend City Charter Section 2.06(a) to specify that vacancy of a councilmember's seat occurs upon failure to attend six regular meetings instead of any six regular and/or special meetings.

Should this proposition be:

Approved

Rejected

City of Kelso

Proposition 3

Charter Amendment Concerning City Manager Provisions

The City Council adopted Resolution 16-1163 concerning City Charter amendments related to the City Manager. If adopted, this proposition would eliminate Article 3 from the Charter related to City Manager appointment, removal, powers, and duties. If adopted, City Manager appointment, removal, powers, and duties would be governed solely by the same optional code city provisions of state law at RCW 35A.13 applicable to all other code cities within the state.

Should this proposition be:

Approved

Rejected

City of Kelso

Proposition 4

Charter Amendment Concerning City Administrative Provisions

The Kelso City Council adopted Resolution 16-1164 concerning City Charter administrative amendments. If approved, this proposition would amend Article IV, and Sections 2.07, 2.09 through 2.14, and 9.01 through 9.02 of the Charter, resulting in such matters being governed by Title 35A RCW, the same optional code city provisions of state law applicable to all code cities within the state.

Should this proposition be:

Approved

Rejected

City of Woodland

Proposition 1

Sales and Use Tax for Transportation Improvements

The Board of the Transportation Benefit District, Woodland, Washington, adopted Resolution No. 2016-001 to fund transportation improvements through a sales tax. This proposition authorizes a tax no greater than two-tenths of one percent (0.2%) on all taxable retail sales within the District for ten years pursuant to RCW 82.14.0455. Tax proceeds will fund projects identified in the Transportation Improvement Programs adopted by the City of Woodland beginning with the 2017-2022 TIP Plan.

Should this proposition be approved?

Yes

No

Sample Ballot

Cowlitz 2 Fire & Rescue

Proposition 1

Bonds for Fire Stations and Vehicle

The Board of Commissioners of Cowlitz 2 Fire & Rescue adopted Resolution No. 767-2016, concerning a proposition to finance fire stations and a vehicle. This proposition would authorize the District to rebuild two fire stations on property owned by the District and acquire and equip a fire fighting vehicle; issue no more than \$11,000,000 of general obligation bonds maturing within 20 years; and levy annual excess property taxes to pay the bonds, all as provided in Resolution No. 767-2016.

Should this proposition be:

Approved

Rejected

Fire Protection District 3

Proposition 1

Toutle Fire Permanent Regular Property Tax Levy for Emergency Medical Services

The Board of Commissioners of Cowlitz County Fire Protection District No. 3 has adopted resolution No. 20160703 calling for an election to authorize a permanent EMS levy. This tax levy, subject to an annual right of referendum by the voters, shall only be used for EMS, and specifically personnel costs, training for such personnel, and equipment, all related to providing emergency medical services.

Shall Cowlitz County Fire Protection District No. 3 be authorized to impose a PERMANENT regular property tax levy of up to \$0.50 per \$1,000.00 of assessed valuation, for EMS services, subject to an annual right of referendum?

Yes

No