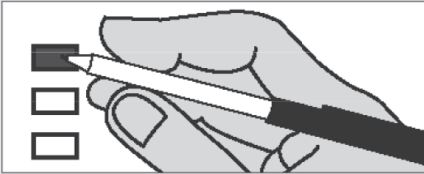


Sample Ballot

Instructions

How to vote

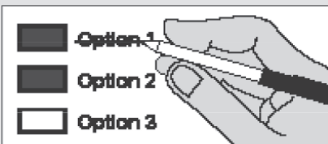


Use blue or black ink.

Vote for one in each race.

If you vote for more than one, no votes will be counted for that race.

If you make a mistake



Draw a line through the entire response or candidate's name.

Then you may make another choice.

Optional write-in



To vote for a candidate not listed, fill in the box to the left of "write-in" and print the name on the dashed line.

Who donates to campaigns?

View contributors for candidates and measures at:

Public Disclosure Commission

www.pdc.wa.gov

Toll Free (877) 601-2828

Local Measures

City of Castle Rock Proposition 1

Shall the City of Castle Rock, Washington, be authorized to levy an excess property tax in the year 2015 for collection in 2016 of \$0.50 per \$1,000 of full assessed value for a total assessment of \$62,058 for the purpose of providing public library services to the citizens of Castle Rock?

Yes

No

City of Kelso Council Position 4 Nonpartisan Office

Kelburn Koontz

Dale Barto

David Futcher

Write-in

City of Kelso Council Position 7 Nonpartisan Office

Adena Grigsby

Gary Schimmel

Nancy Malone

Write-in
