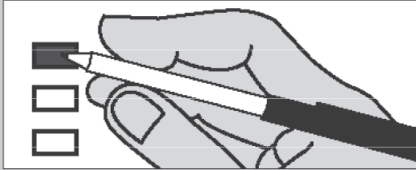


Sample Ballot

Instructions

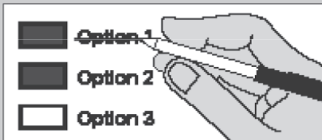
How to vote



Use blue or black ink pen to fill in the box of your choice.

Vote for one. If you vote for more than one, no votes will be counted for that measure.

If you make a mistake



Draw a line through the entire measure response.

Then you may make another choice.

Who donates to campaigns?

View contributors for candidates and measures at:

Public Disclosure Commission

www.pdc.wa.gov

Toll Free (877) 601-2828

Local Measures

Toutle Lake School District No. 130

Proposition 1

Bonds to Modernize and Construct School Facilities

The Board of Directors of Toutle Lake School District No. 130 adopted Resolution No. 08-14, concerning a proposition to improve student safety and educationally outdated facilities. This proposition would authorize the District to: modernize Toutle Lake Jr/Sr High School (including make health, safety and seismic improvements to buildings, high school gymnasium and track), and construct a new multipurpose gymnasium at Toutle Lake Elementary School; issued no more than \$7,095,000 of general obligation bonds maturing within 20 years; and levy annual excess property taxes to repay the bonds, all as provided in Resolution No. 08-14.

Should this proposition be:

Approved

Rejected

Castle Rock School District No. 401

Proposition 1

Replacement Maintenance and Operation Levy

The Board of Directors of Castle Rock School District No. 401 adopted Resolution No. 2014-51 concerning a proposition to finance maintenance and operation expenses. This proposition would authorize the District to meet the educational needs of its students by levying the following excess taxes, in place of an expiring levy, on all taxable property within the District, for support of the District's General Fund maintenance and operation expenses:

Collection Years	Approximate Levy Rate Per \$1,000 Assessed Value	Levy Amount
2016	\$2.93	\$2,050,000
2017	\$2.93	\$2,050,000
2018	\$2.93	\$2,050,000

all as provided in Resolution No. 2014-51. Should this proposition be approved?

Levy Yes

Levy No

Continue voting next page



Sample Ballot

Castle Rock School District No. 401

Proposition 2

Six Year Technology and Capital Projects Levy

The Board of Directors of Castle Rock School District No. 401 adopted Resolution No. 2014-52 concerning a proposition to finance technology and capital project expenses. This proposition would authorize the District to meet the educational needs of its students by levying the following excess taxes on all taxable property within the District, for support of the District's Capital Fund technology and capital project expenses.

Collection Years	Approximate Levy Rate Per \$1,000 Assessed Value	Levy Amount
2016	\$.27	\$200,000
2017	\$.27	\$200,000
2018	\$.27	\$200,000
2019	\$.27	\$200,000
2020	\$.27	\$200,000
2021	\$.27	\$200,000

all as provided in Resolution No. 2014-52. Should this proposition be approved?

Levy Yes

Levy No

Kalama School District No. 402

Proposition 1

Replacement Maintenance and Operation Levy

The Board of Directors of Kalama School District No. 402 adopted Resolution No. 2014/15-02, concerning a proposition to finance maintenance and operation expenses. This proposition would authorize the District to meet the educational needs of its students by levying the following excess taxes, in place of an expiring levy, on all taxable property within the District, for support of the District's General Fund educational maintenance and operation expenses:

Collection Year	Approximate Levy Rate/\$1,000 Assessed Value	Levy Amount
2016	\$2.24	\$2,105,947
2017	\$2.32	\$2,179,947
2018	\$2.40	\$2,256,947

all as provided in Resolution No. 2014/15-02. Should this proposition be approved?

Levy Yes

Levy No

Kalama School District No. 402

Proposition 2

Capital Levy for School Improvements

The Board of Directors of Kalama School District No. 402 adopted Resolution No. 2014/15-03, concerning a proposition to finance school improvements. This proposition would authorize the District to replace roofs at Kalama Middle/High School, acquire and install educational technology equipment and infrastructure, replace wall fabric at Kalama Middle/High School Gymnasium and make main parking area improvements, and levy the following excess taxes, on all taxable property within the District:

Collection Year	Approximate Levy Rate/\$1,000 Assessed Value	Levy Amount
2016	\$0.53	\$500,000
2017	\$0.53	\$500,000
2018	\$0.53	\$500,000

all as provided in Resolution No. 2014/15-03. Should this proposition be approved?

Levy Yes

Levy No