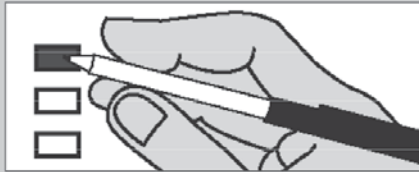


Sample Ballot

Instructions

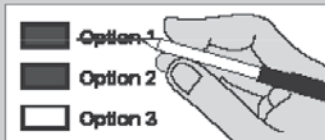
How to vote



Use blue or black ink pen to fill in the box of your choice.

Vote for one. If you vote for more than one, no votes will be counted for that measure.

If you make a mistake



Draw a line through the entire measure response.

Then you may make another choice.

Who donates to campaigns?

View contributors for candidates and measures at:

Public Disclosure Commission

www.pdc.wa.gov

Toll Free (877) 601-2828

Local Measures

Longview School District No. 122

Proposition 1

Replacement Educational Maintenance and Operations Levy

The Board of Directors adopted Resolution No. 720 concerning educational funding. This proposition authorizes the District to levy the following excess taxes, to replace an expiring levy, on all taxable property within the District, to support the District's educational maintenance and operations:

<u>Collection Years</u>	<u>Approximate Levy Rate/\$1,000 Assessed Value</u>	<u>Levy Amount</u>
2015	\$3.50	\$15,129,793
2016	\$3.50	\$15,281,091
2017	\$3.50	\$15,433,902
2018	\$3.50	\$15,588,241

Should this proposition be approved?

Yes

No

Longview School District No. 122

Proposition 2

Replacement Technology and Capital Projects Levy

The Board of Directors adopted Resolution No. 721 concerning a capital and technology improvements levy. This proposition authorizes the District to levy the following excess taxes on all taxable property within the District, for capital improvements and instructional technology:

<u>Collection Years</u>	<u>Approximate Levy Rate/\$1,000 Assessed Value</u>	<u>Levy Amount</u>
2015	\$0.34	\$1,477,093
2016	\$0.34	\$1,491,864
2017	\$0.34	\$1,506,783
2018	\$0.34	\$1,521,851

Should this proposition be approved?

Yes

No

Continue voting next page



Sample Ballot

Toutle Lake School District No. 130

Proposition 1

Replacement Maintenance and Operation Levy

The Board of Directors of Toutle Lake School District No. 130 adopted Resolution No. 07-13, concerning a proposition to finance maintenance and operation expenses. This proposition would authorize the District to meet the educational needs of its students by levying the following excess taxes, in place of an expiring levy, on all taxable property within the District, for support of the District's General Fund maintenance and operation expenses:

<u>Collection Years</u>	<u>Approximate Levy Rate/\$1,000 Assessed Value</u>	<u>Levy Amount</u>
2015	\$3.22	\$1,110,000
2016	\$3.21	\$1,110,000
2017	\$3.20	\$1,110,000

all as provided in Resolution No. 07-13. Should this proposition be approved?

Levy Yes

Levy No

Toutle Lake School District No. 130

Advisory Bond Measure

Toutle Lake School District No. 130 has passed Resolution 06-13 concerning an advisory vote on the District pursuing a bond measure on taxable property within the District to complete modernization and improvements of the high school building and gymnasium, the elementary school covered play shed, parking/sidewalks and track, and energy and safety/seismic standards upgrades. If you vote yes, you are stating that you favor the District proposing a measure to the voters for general obligation bonds estimated to cost \$1.50 per one-thousand dollars of assessed valuation and maturing within a maximum term of 20 years. Should the District propose the bond measure?

Yes

No

Woodland School District No. 404

Proposition 1

Replacement Educational Maintenance and Operations Levy

The Board of Directors adopted Resolution No. 2586 concerning a proposition for educational funding. This proposition authorizes the District to levy the following excess taxes, to replace an expiring levy, on all taxable property within the District, to support the District's educational maintenance and operations:

<u>Collection Years</u>	<u>Approximate Levy Rate/\$1,000 Assessed Value</u>	<u>Levy Amount</u>
2015	\$2.96	\$3,950,000
2016	\$2.88	\$3,950,000
2017	\$2.79	\$3,950,000

Should this proposition be approved?

Yes

No

Kelso School District No. 458

Proposition 1

Replacement Educational Programs and Operations Levy

The Board of Directors of Kelso School District No. 458 adopted Resolution No. 13/14-3 concerning a proposition to finance educational programs and operations. This proposition would authorize the District to maintain educational programs, facilities and small classes, and fund operations, by levying the following excess taxes, in place of an expiring levy, on all taxable property within the District:

<u>Collection Years</u>	<u>Approximate Levy Rate/\$1,000 Assessed Value</u>	<u>Levy Amount</u>
2015	\$4.21	\$7,467,422
2016	\$4.21	\$7,579,433
2017	\$4.21	\$7,693,125
2018	\$4.21	\$7,808,522

as provided in Resolution No. 13/14-3. Should this proposition be approved?

Levy Yes

Levy No

End of Ballot